

# How should Swindon Borough Council be run?



These are the options...



## Your views count

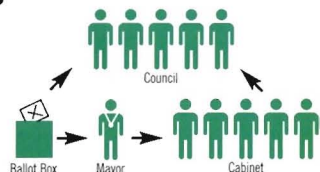
The Government requires Swindon Borough Council to consult local people to see how they want their Council to be run and which type of political leadership they would like. There are three basic options open to the Council and these are set out in this leaflet.

# New Political Structure - The Options

## Option A

### DIRECTLY ELECTED MAYOR WITH CABINET

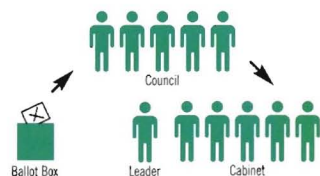
- You elect the Mayor who will be in office for four years (In a separate election from that for other Councillors)
- The Mayor becomes the political leader and is responsible for the way the Council is run.
- The Mayor chooses a cabinet from elected Councillors to assist him or her.
- The Mayor and Cabinet form the Executive.
- The Mayor and the Cabinet can propose policies and budgets to the Council.
- The Mayor can take decisions alone or with the Cabinet.
- The Mayor can delegate executive functions to the Cabinet or to individual members of the Cabinet
- The Council cannot remove the Mayor.



## Option B

### CABINET WITH A LEADER

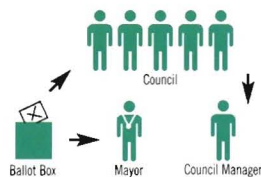
- You elect Councillors to the Council
- The Council elects a Leader (an existing Councillor who is normally the leader of the political group with the majority of seats on the Council).
- The Leader of the Council chooses a Cabinet from elected Councillors to assist him or her.
- The Leader can delegate executive functions to individual Cabinet members.
- The Leader and Cabinet form the executive.
- The Leader and Cabinet can propose policies and budgets to the Council
- The Council can remove the Leader.



## Option C

### DIRECTLY ELECTED MAYOR WITH A COUNCIL MANAGER

- You elect the Mayor who will be in office for four years (In a separate election from that for other Councillors)
- The Mayor would lead the Council and propose policies.
- The Council would appoint a Council Manager who would be an employee of the Council
- The Mayor and the Council Manager would form the executive
- Decisions can be taken by the Mayor or the Council Manager
- The Council cannot remove the Mayor but it could dismiss the Council Manager.



*The role of the Mayor in options A and C would be very different from that of the current Mayor who is the symbolic "first citizen" of Swindon and has a largely ceremonial role.*



**PUBLIC**

**ELECTS**

**DIRECTLY ELECTED MAYOR**

- Provides political leadership
- Proposes policy framework & budget
- Takes executive decisions within policy framework
- Delegates executive decisions to the Cabinet

**COUNCIL**

- Agrees budget
- Decides new constitution
- Agrees policy framework
- Makes certain appointments

Mayor and Cabinet form the Executive

**CABINET**

- Appointed by Mayor from the Council
- Implements policies under the guidance of the Mayor
- Takes delegated executive decisions as a group or individuals

**APPOINTS**

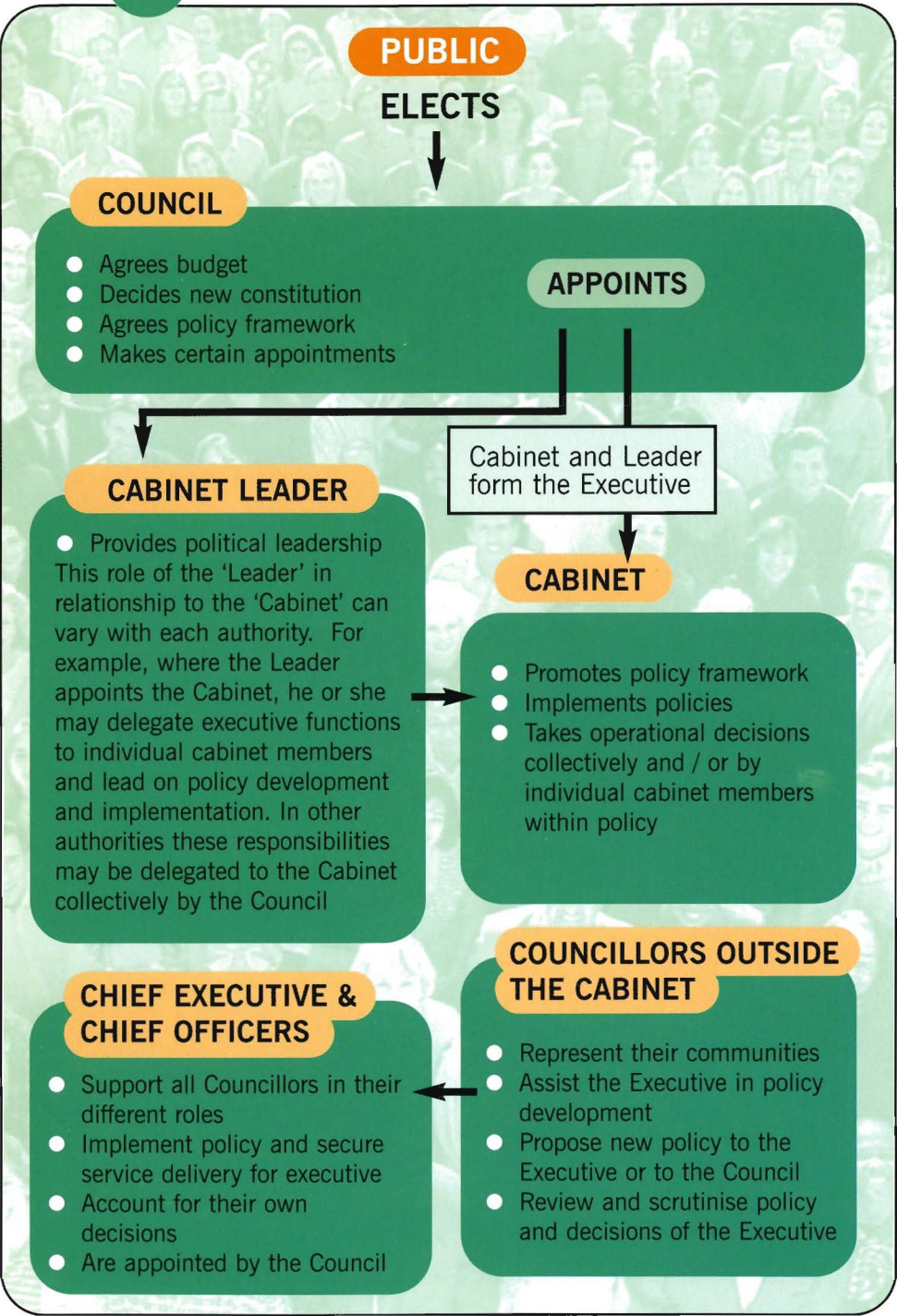
**CHIEF EXECUTIVE & CHIEF OFFICERS**

- Support the Mayor and all Councillors in their different roles
- Implement policy and secure service delivery
- Account for their own decisions
- Are appointed by the Council

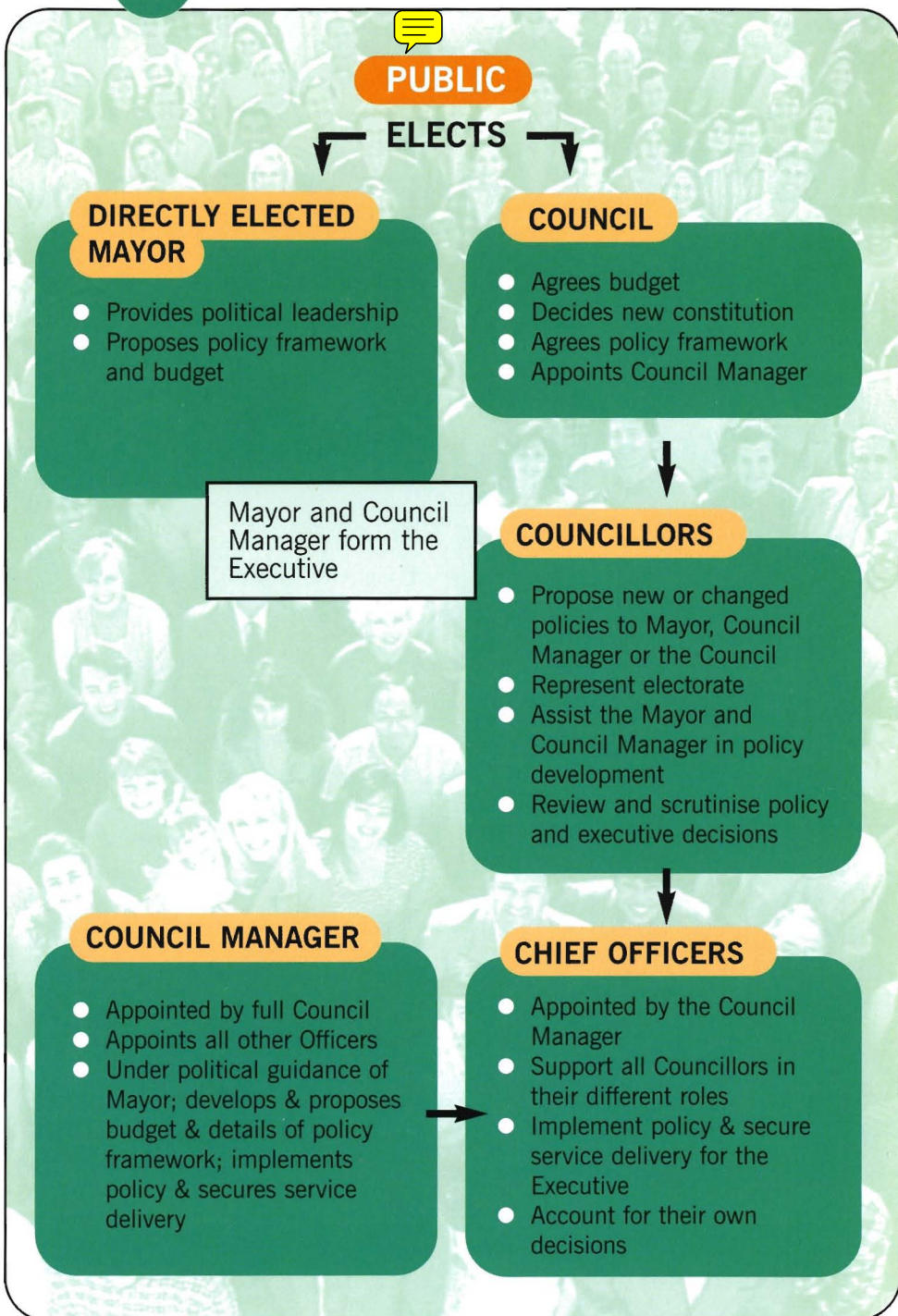
**COUNCILLORS OUTSIDE THE CABINET**

- Represent their communities
- Propose new or changed policies to Mayor, Cabinet, or the Council
- Review and scrutinise policy and decisions of the Executive

OPTION **B** CABINET WITH A LEADER







**REPLY CARD***Please respond by 6 July 2001*

The council wants your views. Please indicate which option you would like to see at Swindon Borough Council

**A** Directly Elected Mayor with Cabinet ☐

**B** Cabinet with a Leader ☐

**C** Directly Elected Mayor with a Council Manager ☐

We would be grateful if you would answer these questions about yourself so that we can establish whether we have a representative view of residents within the borough

Are you: ☐ Male ☐ Female  
☐ 18-24 ☐ 25-34 ☐ 35-44  
☐ 45-59 ☐ 60-74 ☐ 75+

To which of these groups do you consider you belong?

☐ White British ☐ Irish

☐ White Other (please specify)

☐ Black Caribbean ☐ Black African ☐ Black British

☐ Black Other (please specify)

☐ Indian ☐ Pakistani ☐ Bangladeshi

☐ Asian British ☐ Chinese

Any Other Group (please specify)

What is your postcode?

You can also express your views by fax or e-mail:

**Fax: 01793 463614**

**E-mail: [smcguire@swindon.gov.uk](mailto:smcguire@swindon.gov.uk)**

*Thank you for completing this questionnaire*

**RESPONSE SERVICE**

License No. PHQ 16

2



Swindon Borough Council  
Borough Solicitor  
Civic Offices  
Euclid Street  
SWINDON  
SN1 2BR